

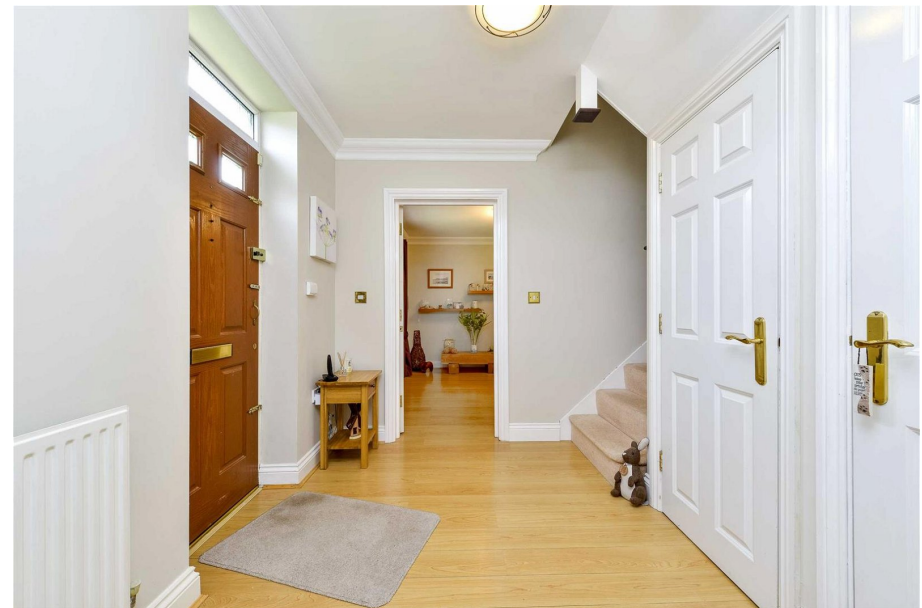


**HENDERSON
CONNELLAN**
ESTATE AGENTS

Hogarth Drive, Barton Seagrave, Kettering

Offers Over £500,000

5 3 1



"The Bigger Picture"

This substantial detached residence built by Messrs Charles Church occupies an impressive plot nestled at the bottom of this exclusive development, just off Warkton Lane. Offered to the market with NO CHAIN. The impressive interior benefits from gas central heating and UPVC double glazed windows to include an entrance hall, guest cloakroom, living room enjoying a dual aspect and a free flowing Kitchen/ Dining room with select integrated appliances and adjoining utility room. Upstairs there are five significant bedrooms arranged over two floors, a principal bathroom and three bedrooms to the first floor including the master with dressing room and designer en suite, the second floor with two further bedrooms with Jack and Jill en suite. Outside, there is a lawned fore garden, generous private driveway for six cars, double garage and an established south facing rear garden. An exceptional home and quiet location!

Living Room - 6.83m x 3.61m (22'5" x 11'10")

Kitchen/Dining Room - 6.83m x 3.05m (22'5" x 10'0")

Utility Room - 1.8m x 1.7m (5'11" x 5'7")

Bedroom 1 - 4.19m x 3.56m (13'9" x 11'8")

Ensuite - 2.44m x 1.57m (8'0" x 5'2")

Bedroom 2 - 3.23m x 3.02m (10'7" x 9'11")

Bedroom 3 - 3.02m x 2.77m (9'11" x 9'1")

Bathroom - 2.84m x 2.44m (9'4" x 8'0")

Bedroom 4 - 3.89m x 3.53m (12'9" x 11'7")

Bedroom 5 - 6.63m x 3.02m (21'9" x 9'11")

Jack & Jill Ensuite - 2.87m x 2.36m (9'5" x 7'9")





Total area: approx. 194.3 sq. metres (2091.5 sq. feet)

- Town House
- Two Reception Rooms
- Parking For Six Cars
- EPC RATING: C
- Five Bedrooms
- Three Bathrooms
- Council Tax: G



Disclaimer: These particulars do not form part of any offer or contract and should not be relied upon as statements or representations of fact. Any areas, measurements of distances are approximate. The text, photographs and plans are for guidance only and are not necessarily comprehensive.

15-16 Market Place, Kettering,
Northamptonshire, NN16 0AJ

